

WMS – standard version

CONTENT

| | |
|---|-----------|
| 1. Basic parameters | 2 |
| 2. Basic diameters..... | 3 |
| 2.1. Machines WMS Optimum, WMS Standard, WMS Profi with standard turntable or with turntable with scale | 3 |
| 2.2. Machines WMS Optimum, WMS Standard, WMS Profi with turntable with cut-out | 4 |
| 2.1. Machines WMS Optimum, WMS Standard, WMS Profi with slim turntable | 5 |
| 3. Basic components parameters | 6 |
| 3.1. Turntable..... | 6 |
| 3.2. Mast..... | 7 |
| 3.3. Prestretch device | 7 |
| 3.4. Top-platen..... | 8 |
| 4. Parameters of additional accessories..... | 10 |
| 4.1. Turntable access ramp..... | 10 |
| 4.2. Foil constriction roller | 10 |
| 5. Additional information | 11 |
| 5.1. Environment..... | 11 |
| 5.2. Connection of the machine..... | 11 |
| 5.3. Expendable material | 12 |
| 5.4. Manufacturers | 12 |
| 5.5. Standard colours | 12 |
| 5.6. Documentation..... | 12 |
| 5.7. Weights..... | 13 |
| 5.8. Transport dimensions..... | 14 |

| | |
|-------------------------|------------------------------|
| Standard version | – bold face |
| option | – thin face, grey background |

1. Basic parameters

| | | Optimum | Standard | Profi |
|---------------------------|---|--|--|--|
| control | | programmable system | | |
| | count of programs | 2 | 6 | 20 |
| turntable | standard | 15, 16.5, 18 | 15, 16.5, 18, 23 | |
| | with cut-out | 15, 16.5, 18 | | |
| | slim | no | 16.5 | |
| | standard, with scale. | 15, 16.5, 18 | | |
| | with cut-out and scale | no | | |
| | maximum load | kg | turntable standard: 1200, 1500, 2500 turntable with weighing equipment: 1200 turntable with cut-out, slim turntable: 1000 | |
| | foot pedal | no | | |
| | regulation [1] | Turntable standard, with cut-out, with weighing eq.: no (contactor) , frequency converter Turntable slim: frequency converter | | |
| | oriented stop [2] | standard, precise | | |
| mast | | m | 2300, 3000, 3500 | |
| | height of goods check [3] | optical | | |
| prestretch device | performance | hand b., elmag. b., mech.p., 1motor, 1motor Light | hand b., elmag. b., mechanical p., 1motor, 1motor Light, 2motor | hand b., elmag. b., mechanical p., 1motor, 1motor Light, 2motor |
| | tearing [4] | no | no, eligible with 1motor, 2motor | |
| top platen | for: turntable standard, turntable with cut-out | no, electric, pneumatic, portal | | |
| | for turntable with weighing equipment | no, electric, pneumatic | | |
| additional accessories | access ramp | turntable with cut-out: no turntable with cut-out: optional slim turntable: 1 pc in standard, optional 1 or 2 additional, 1 or 2 auxiliary ramp | | |
| | pit frame | turntable with cut-out: no turntable with cut-out: eligible | | |
| pallet photography | number and installation of cameras | no | no, 1 camera on a column | |
| pallet identification [5] | | no | no, barcode scanner, barcode | |

[1] control of turntable speed

[2] oriented stop – turntable stopping accuracy in the same position; see chap. 3.1.5

[3] goods height check during the wrapping; the pallet is wrapped all over the height

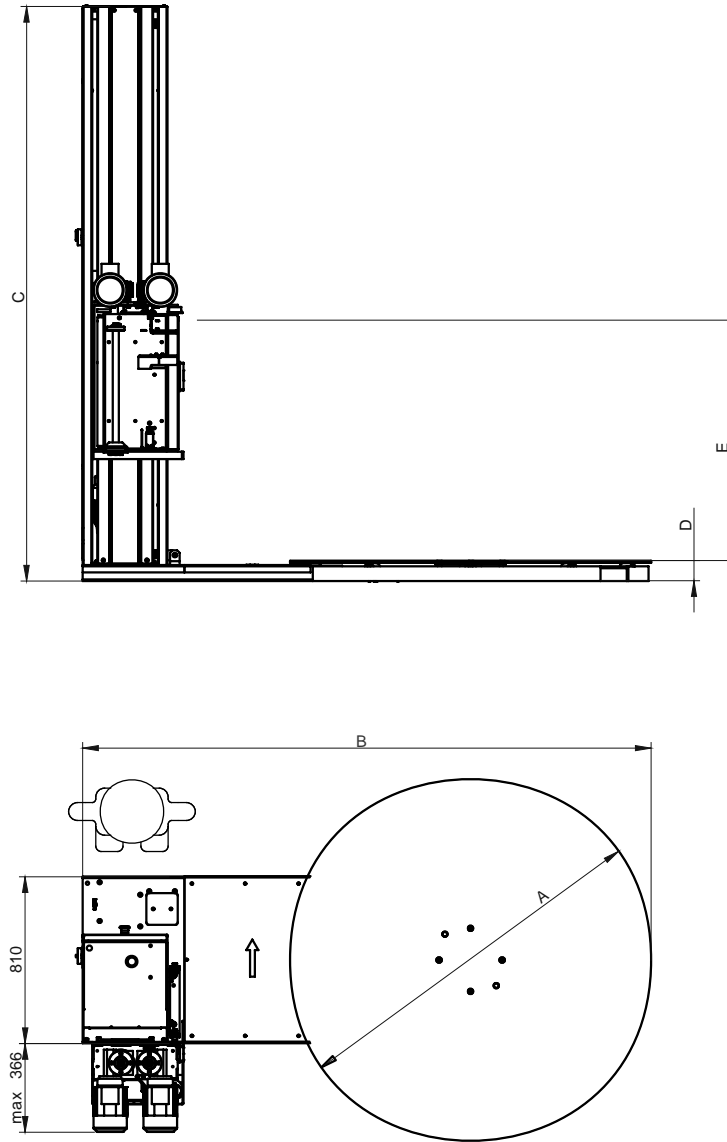
[4] automatic foil tearing at the moment of end of wrapping

[5] is reasonable for machines equipped with weighing equipment, photo camera or both

2. Basic diameters

2.1. Machines WMS Optimum, WMS Standard, WMS Profi with standard turntable or with turntable with scale

Figure contour – working place



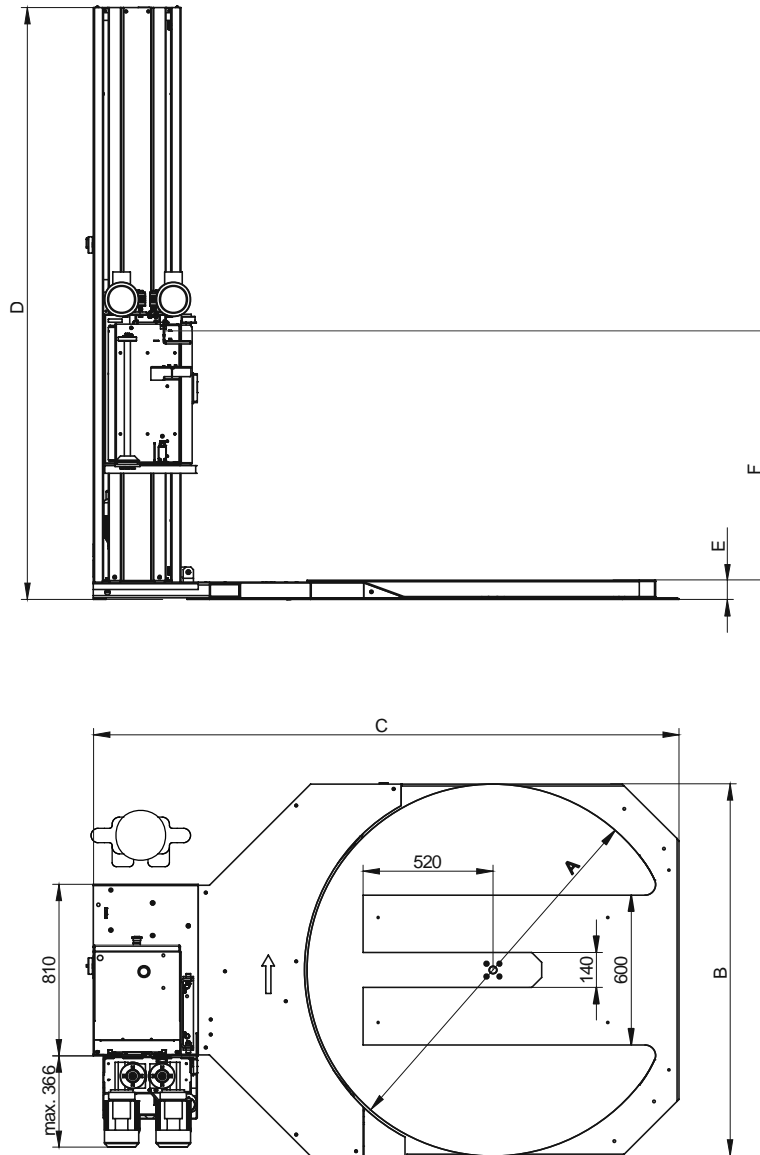
| dimension | | turntable size | | | | | | | mast | | |
|------------|----|----------------|----------|----------|----------|------------|----------|----------|------|------|------|
| | | standard | | | | with scale | | | | | |
| | | 15 | 16.5 | 18 | 23 | 15 | 16.5 | 18 | 2300 | 3000 | 3500 |
| A | mm | 1490 | 1650 | 1800 | 2300 | 1490 | 1650 | 1800 | | | |
| B | mm | 2350 | 2505 | 2655 | 3150 | 2350 | 2505 | 2655 | | | |
| C | mm | | | | | | | | 2366 | 3066 | 3566 |
| D | mm | 77 | 77 | 79 | 79 | 93 | 93 | 95 | | | |
| E min. [1] | mm | | | | | | | | 510 | 510 | 510 |
| E max. [1] | mm | | | | | | | | 2430 | 3130 | 3630 |
| weight [2] | kg | max. 490 | max. 510 | max. 600 | max. 775 | max. 560 | max. 590 | max. 690 | | | |

[1] Wrap height – max. height between turntable and upper edge of foil on reel in prestretch device

[2] Without top-platen; actual weight according to machine equipment.

2.2. Machines WMS Optimum, WMS Standard, WMS Profi with turntable with cut-out

Figure contour – working place



| dimension | | turntable type | | | mast | | |
|-----------------|----|-----------------|----------|----------|-------------|------|------|
| | | 15 | 16.5 | 18 | 2300 | 3000 | 3500 |
| A | mm | 1490 | 1650 | 1800 | | | |
| B vč. závor [1] | mm | 1590 | 1750 | 1900 | | | |
| C | mm | 2354 | 2505 | 2655 | | | |
| D | mm | | | | 2366 | 3066 | 3566 |
| E | mm | 78 | 78 | 78 | | | |
| F min. [2] | mm | | | | 510 | 510 | 510 |
| F max. [2] | mm | | | | 2430 | 3130 | 3630 |
| weight [3] | kg | max. 520 | max. 570 | max. 615 | | | |

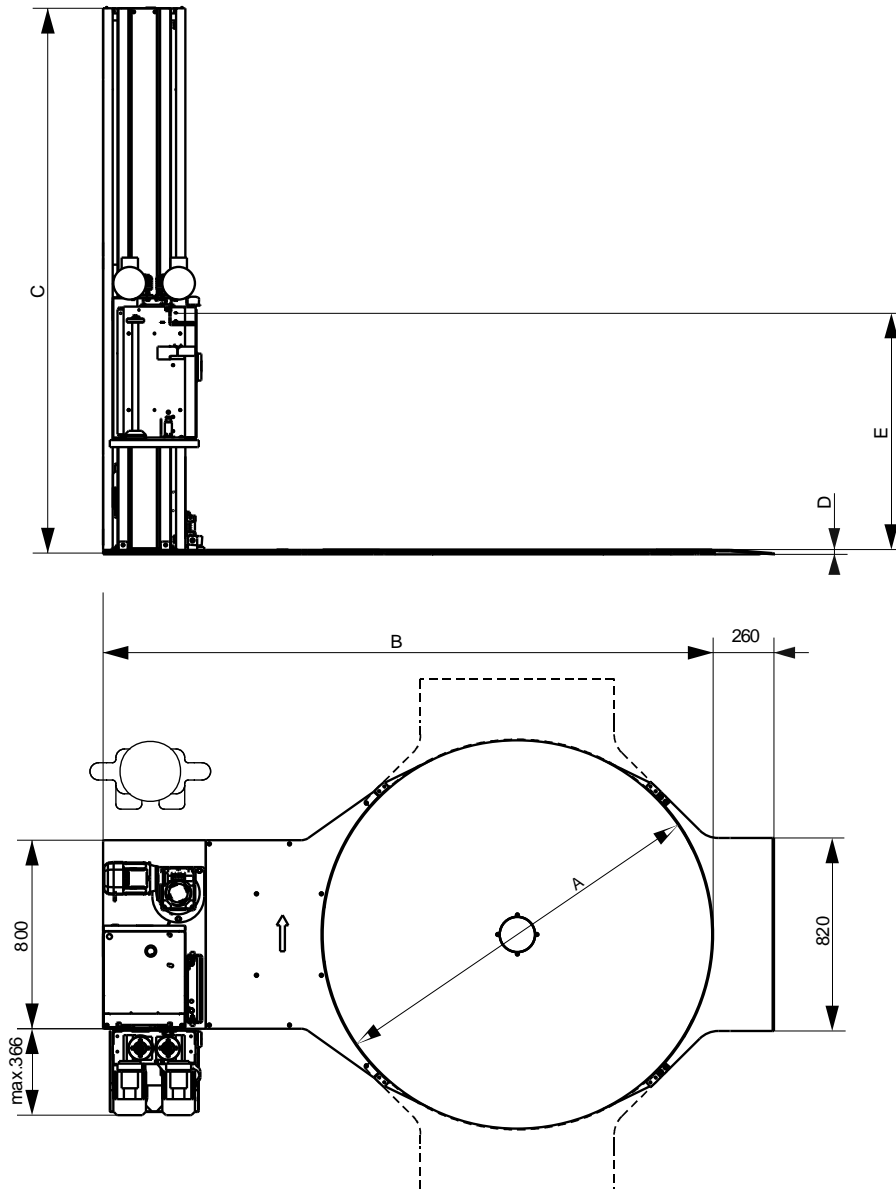
[1] Safety light barriers are mounted according to chap. 3.1.6 – they are not in the picture

[2] Wrap height – max. height between turntable and upper edge of foil on reel in prestretch device

[3] Without top-platen; actual weight according to machine equipment.

2.1. Machines WMS Optimum, WMS Standard, WMS Profi with slim turntable

Figure contour – working place



| dimension | | turntable size | | | mast | | |
|------------|----|----------------|-----------------|--|-------------|------|------|
| | | slim | | | | | |
| | | | 16.5 | | 2300 | 3000 | 3500 |
| A | mm | | 1650 | | | | |
| B | mm | | 2580 | | | | |
| C | mm | | | | 2319 | 3019 | 3519 |
| D | mm | | 18 | | | | |
| E min. [1] | mm | | | | 510 | 510 | 510 |
| E max. [1] | mm | | | | 2430 | 3130 | 3630 |
| weight [2] | kg | | max. 530 | | | | |

[1] Wrap height – max. height between turntable and upper edge of foil on reel in prestretch device

[2] Without top-platen; actual weight according to machine equipment.

3. Basic components parameters

3.1. Turntable

3.1.1. Turntable 15

| | | standard | | | with scale | with cut-out |
|----------------------|-------|---------------------------|---------------|-----------------------------|------------------|-----------------------------|
| gearing | | gearbox | | belt and chain transmission | gearbox | belt and chain transmission |
| load capacity | kg | 1500 | 2500 | 1200 | 1200 | 1000 |
| pallet diagonal max. | mm | 1500 (dimension 1200×800) | | | | |
| speed | 1/min | 10 | | | | |
| accuracy of stop | ° | see tab. 3.1.5 | | | | |
| roller | | standard plastic | solid plastic | standard plastic | standard plastic | standard plastic |
| motor (3×400V/50Hz) | W | 370 | 370 | 370 | 370 | 370 |
| cut-out orientation | | - | | | | see chap. 3.1.6 |

3.1.2. Turntable 16.5

| | | standard | | | slim | with scale | with cut-out |
|----------------------|-------|----------------------------|---------------|-----------------------------|---------|------------------|-----------------------------|
| gearing | | gearbox | | belt and chain transmission | gearbox | gearbox | belt and chain transmission |
| load capacity | kg | 1500 | 2500 | 1200 | 1000 | 1200 | 1000 |
| pallet diagonal max. | mm | 1650 (dimension 1200×1000) | | | | | |
| speed | 1/min | 10 | | | | | 9 |
| accuracy of stop | ° | see tab. 3.1.5 | | | | | |
| roller | | standard plastic | solid plastic | standard plastic | segment | standard plastic | standard plastic |
| motor (3×400V/50Hz) | W | 370 | 370 | 370 | 370 | 370 | 370 |
| cut-out orientation | | - | | | | | see chap. 3.1.6 |

3.1.3. Turntable 18

| | | standard | | | With scale | with cut-out | |
|-----------------------|-------|------------------|---------------|-----------------------------|------------|-----------------------------|-----|
| gearing | | gearbox | | belt and chain transmission | gearbox | belt and chain transmission | |
| load capacity | kg | 1500 | 2500 | 1200 | 1200 | 1000 | |
| pallet diagonal max.. | mm | 1800 | | | | | |
| speed | 1/min | 10 | | | | | 8.5 |
| accuracy of stop | ° | see tab. 3.1.5 | | | | | |
| roller | | standard plastic | solid plastic | standard plastic | | standard plastic | |
| motor (3×400V/50Hz) | W | 370 | 370 | 370 | | 550 | |
| cut-out orientation | | - | | | | see chap. 3.1.6 | |

3.1.4. Turntable 23

| | | standard | | with cut-out |
|----------------------|-------|------------------|---------------|-----------------------------|
| gearing | | gearbox | | belt and chain transmission |
| load capacity | kg | 1500 | 2500 | 1000 |
| pallet diagonal max. | mm | 2300 | | |
| speed | 1/min | 6.66 | | 6.66 |
| accuracy of stop | ° | see tab. 3.1.5 | | |
| roller | | standard plastic | solid plastic | standard plastic |
| motor (3×400V/50Hz) | W | 750 | | 550 |
| cut-out orientation | | -- | | přímá v ose stroje |

Marking of **standard** and **optional** equipment

3.1.5. Overpass of turntable (oriented stop)

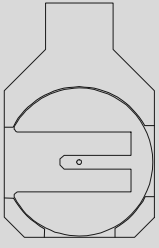
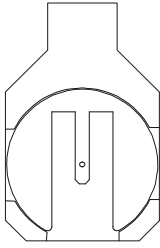
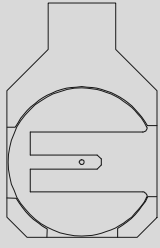
| | mode | |
|-------------------------------------|-------------|----------------------|
| | full range | continual conditions |
| oriented stop (design of turntable) | | |
| standard (without converter) | ±60° | ±10° |
| precise (with converter) | ±8° | ±1° |

full range: overpass is defined for range of load 0-1500 kg, for range of secondary pre-stretch : 70-120% and for maximal speed of turntable.

continual conditions: exactness of repeated stop for same secondary pre-stretch load (difference max. 100 kg) and speed of turntable.

3.1.6. Orientation of cut-out

For turntable with cut-out only. Orientation of cut-out for loading of goods on turntable with low-lift trolley

| model | 15, 16.5, 18 with cut-out | | |
|------------------------|---|--|---|
| orientation of cut-out |  |  |  |
| | left | front | right |

3.2. Mast

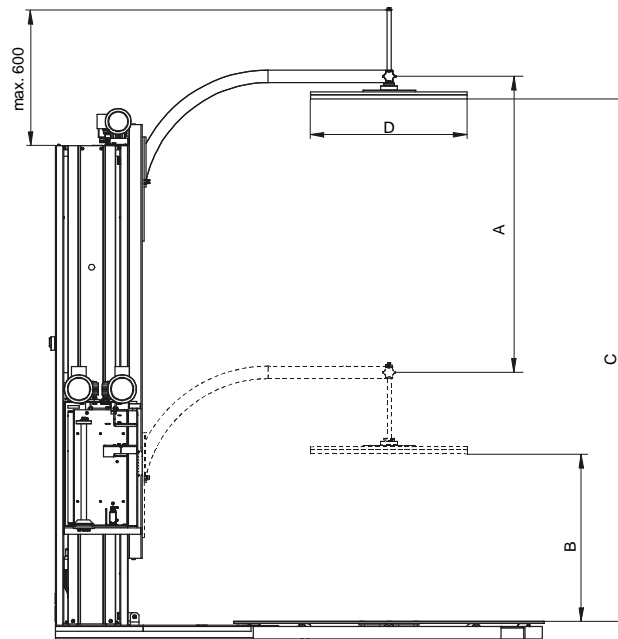
| model | | 2300 | 3000 | 3500 |
|------------------------------|----|-------------------------|------|------|
| height | mm | 2300 | 3000 | 3500 |
| width | mm | 350 | | |
| depth | mm | 435 | | |
| profile | mm | - | | |
| film carriage drive | | 180W 3x400V 50Hz | | |
| Height of wrapping start [1] | mm | 0, 75, 150 | | |

[1] Enables setting of distance between turntable surface and lower edge of foil (at zero prestretching).

3.3. Prestretch device

| | | hand brake | mechanic | el.mag. brake | 1motor LIGHT | 1motor | 2motor |
|------------------------------------|----|--------------------|--------------|-----------------------|--------------------|------------------------|---------------------------|
| height | mm | 617 (bez rukojeti) | 717 | 717 | 787 | 836 | 820 |
| width | mm | 396 | 396 | 396 | 396 | 390 | 390 |
| depth | mm | 295 | 295 | 295 | 295 | 360 | 360 |
| regulation of pre-stretch | | hand | transmiss. | el. mg. brake | motor + transmiss. | motor + transmiss. | 2 motors |
| primary pre-stretch standard | % | - | 130 | - | 180 | 180 | - |
| primary pre-stretch optional | % | - | 80, 130, 180 | - | 80, 130, 180 | 80, 130, 180, 230, 280 | 50 to 500 |
| secondary pre-stretch | % | - | - | 0 to 100 (brzd. sily) | 70 to 400 | 70 to 400 | 70 to 400 |
| power consumption of el. mg. brake | W | - | - | 18 | - | - | - |
| motor (3x400V 50Hz) | W | - | - | - | 370 | 370 | driving 370 driven 250 |
| tearing of film | | no | no | no | no | optional | optional |

3.4. Top-platen



3.4.1. Electric top-platen

| | | | | |
|-----------------------|----|---|---------|------|
| for mast | mm | 2300 | 3000 | 3500 |
| pressing force | N | cca. 500, set up fixed | | - |
| A – stroke | mm | 1300 | 2000 | - |
| B – min. height [1] | mm | 850 | | - |
| C – max. height [1] | mm | 2450 | 3150 | - |
| motor | | 120W 3x400/230V 50Hz | | - |
| chain | | 086 | | - |
| plate | | round, not oriented, foam rubber coating | | - |
| D – diameter of plate | mm | Ø 750 | | - |
| diameter of plate | kg | max. 55 | max. 65 | |

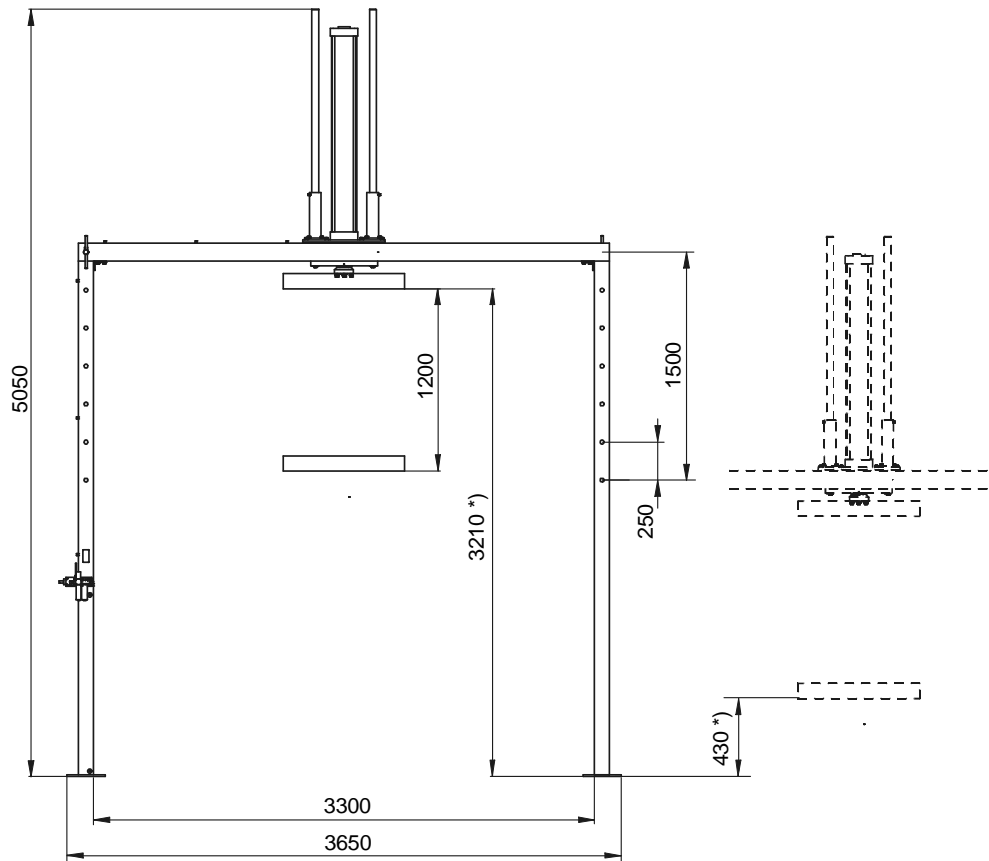
[1] min./max. height of the top platen over turntable (after displacement of platen axe, without spare for handling with pallet and without view for the possibility or impossibility of the top of goods wrapping on pallet)

3.4.2. Pneumatic top-platen

| | | | | |
|-----------------------|-----|---|---------|------|
| for mast | mm | 2300 | 3000 | 3500 |
| air press | MPa | 0.6 to 1.5 MPa | | - |
| pressing force | N | min. 300, max. 950 – adjustable | | - |
| A – stroke | mm | 1300 | | - |
| B – min. height [1] | mm | 850 | - | |
| C – max. height [1] | mm | 2450 | - | |
| pneumatic cylinder | | diameter of piston 40 mm | | - |
| plate | | round, not oriented, foam rubber coating | | - |
| D – diameter of plate | mm | Ø 750 | | - |
| hmotnost | kg | max. 65 | max. 70 | |

[1] min./max. height of the top platen over turntable (after displacement of platen axe, without spare for handling with pallet and without view for the possibility or impossibility of the top of goods wrapping on pallet)

3.4.3. Portal top-platen



*) Wrap height – the height of the goods incl. the height of turntable (chap. **Chyba! Nenalezen zdroj odkazů.** 2.1, diameter D, or chap. 2.2, diameter E) with standard plate size 100 mm after displacement of platen axe, without spare for handling with pallet and without view for the possibility or impossibility of the top of goods wrapping on pallet.

| for all version of turntables and masts | | |
|---|-----|---|
| top-platen control | | manual |
| air press | MPa | 0.6 to 1.5 MPa |
| pressing force | N | min. 0, max. 13000 – adjustable |
| pneumatic cylinder | | diameter of piston 160 mm |
| plate | | rectangular, nonoriented, with the cut-outs for banding |
| dimensions of plate | mm | 1000x600; according to order |

The load capacity of the turntable must be determined as the sum of the maximum weight of the packed pallet and the thrust of the top-platen!

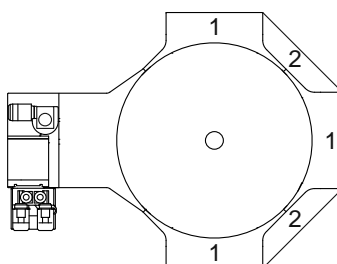
4. Parameters of additional accessories

4.1. Turntable access ramp

| Version of turntable access ramp | | standard | extended 1700 | for turntable with scale | For slim turntable [1] | Auxiliary ramp for slim turntable |
|----------------------------------|----|-------------------------|----------------------|--------------------------------|------------------------|-----------------------------------|
| for turntable | | 15, 16.5, 18, 23 | 15, 16.5, 18, 23, 25 | 15 with scale, 16.5 with scale | 16.5 | 16.5 |
| width | mm | 1000 | 1000 | 1000 | 820 | 955 |
| length (total) | mm | 1247 | 1677 | 1778 | 500 | 200 |
| long of sloping part | mm | 1027 | 1457 | 1558 | 185 | 132 |
| height | mm | 76 | 76 | 93 | 18 | 18 |
| slope | ° | 4 | 2,8 | 3.25 | 4 | 5,66 |
| weight | kg | max. 70 | max. 95 | max. 105 | 20 | 9 |

[1] 1 piece comes standard with the machine

Access ramps and auxiliary access ramps for slim turntable – installation options



1 – Access ramp

2 – Auxiliary access ramp. Must be used with two standard access ramp.

4.2. Foil constriction roller

| | | |
|------------------------------|----|---|
| for turntables | | 15, 16.5, 18, 23 standard 15, 16.5, 18, 23 with cut-out 15, 16,5 with weighing equipment |
| Height of wrapping start [1] | mm | 38 to 154 mm |
| Setting of height | | stepless |

[1] Enables setting of distance between turntable surface and lower edge of foil(at zero prestretching).

5. Additional information

5.1. Environment

| | | |
|------------------|--|--|
| environment | according D60364-5-51:2009 | normal, AA5+AB5 |
| | according EN 60721-3-3 | 3K3/3B1/3C1/3S1/3M1 |
| | workplace | indoor, covered |
| | degree of corrosion aggressiveness of the environment according to ISO 12944 | C2 |
| | temperature | +5°C to +40°C |
| | rate of temperature change | max. 0.5°C/min. |
| | relative humidity | 30% to 85% without condensation |
| | altitude | up to 2000 m |
| | dust | max. 2mg/m ³ , granular size max. 10 µm |
| | explosive environment | no (prohibited) |
| | emission of noise | 63.9 dB |
| | floor | horizontal, concrete, flatness max. ±3 mm/2m |
| | workplace lighting | EN 12464-1 |
| | area around machine | EN 547-1 |
| | interference elimination | EN 61000-6-3 |
| | interference resistance | EN 61000-6-1 |
| operating staff | age | 18 and more |
| | burden | 17 kg (reel with film during loading) |
| | aquaint with user manual | obligatory |
| revision | initial revision from manufacturer | EN 60204-1 |
| | revision before operating | according to national regulations |
| CE certification | | yes |
| service life | | 50 000 hours |

5.2. Connection of the machine

| | | | Optimum | Standard | Profi |
|------------------|----------------------------|-----|--|----------|-------|
| compressed air | input | MPa | 0.6 to 1.2 [1] | | |
| | working | MPa | 0.5 [1] | | |
| air consumption | pneumatic top-platen | | cca. 32 l/cycle [1] | | |
| | portal top-platen | | cca. 48 l/cycle [1] | | |
| el. installation | power supply | | TNC-S 3+PE+N 3×400/230V, 50Hz ČSN EN 50160 (EN 50160) | | |
| | | | TN-C-S, 1L+N+PE 230V 50-60 Hz ČSN EN 50160 (EN 50160) | | |
| | power requirement | kVA | 2.7 | 4.3 | 4.3 |
| | protection | A | 16 | 16 | 16 |
| | voltage of control circuit | V | 24= | | |
| IP-code | motors | | IP55 | | |
| | switch boards | | IP54 | | |
| | sensors | | IP65 | | |

[1] For machines equipped with pneumatic or portal top-platen only

Marking of **standard** and **optional** equipment

5.3. Expendable material

| | | | |
|--------------|---------------------|----|------------------------|
| foil wrapper | material | | PE stretch foil |
| | roll diameter | mm | max. 250 |
| | foil width | mm | 500 |
| | tube diameter | mm | 74 to 86 |
| | weight of full roll | kg | cca. 17 |
| | foil thickness | µm | 20 to 40 |

5.4. Manufacturers

| | | Optimum Standard | Profi |
|----------------------|-------------------|--------------------------------|-------|
| pneumatic components | | FESTO | |
| PLC | | PMA | |
| cells and sensors | optical | Schneider | |
| | inductive | Schneider | |
| contactors | | Schneider | |
| circuit breakers | | Schneider | |
| auxiliary relays | | Schneider | |
| distribution frames | | WAGO | |
| controllers | | Schneider | |
| motors: | turntable | KEM, Bonfiglioli, Lenze | |
| | foil carriage | Bonfiglioli | |
| | top-platen | Bonfiglioli | |
| | prestretch device | Bonfiglioli | |

Different components may be used, but do not affect the operation of the device

5.5. Standard colours

| | RAL 9006 | grey | possible to change according to customers wish |
|-----------------------|-----------------|---|--|
| mast, turntable frame | RAL 9006 | grey | possible to change according to customers wish |
| moving parts | RAL 3020 | red | not possible to change |
| safety parts | RAL 1018 | yellow | not possible to change |
| others | RAL 9005 | black | possible to change according to customers wish |
| | - | galvanized parts without colouring | not possible to change |

5.6. Documentation

| Customer`s country | CZ, SK | DE, A | PL | RU, post soviet states | ostatní |
|---|---|--------------------|--------------------|------------------------|--------------------|
| count of impression [1] | 1 | 1 | 1 | 1 | 1 |
| User`s guide | CZ | DE | PL | RU | GB |
| Wiring diagram | CZ | DE | GB | GB | GB |
| Manuals of components (sensors, converters) | CZ (GB) [2] | DE (GB) [2] | DE (GB) [2] | DE (GB) [2] | DE (GB) [2] |
| Spare parts catalogue | CZ | DE | PL | RU | GB |
| CE certification | CZ | DE | GB | GB | GB |
| Certificate of warranty | CZ | DE | GB | GB | GB |
| Overtake protocol | CZ | DE | GB | GB | GB |
| Documentation on CD ROM | on demand (languages consistent with standard documentation) | | | | |

Another languages: must be specified

[1] Count of impression for one machine.

[2] On order. Delivered documentation (original or copy) delivered by producer of component

Marking of **standard** and **optional** equipment

5.7. Weights

All weights are rounded to 5 kg.

5.7.1. Basic components weights

| turntable | | 15 | | 16.5 | | 18 | | 23 | |
|-------------------------|--|---------------|---------------|--------|--------|--------|--------|--------|---|
| | | G | B | G | B | G | B | G | B |
| standard | | 255 kg | 260 kg | 285 kg | 290 kg | 370 kg | 375 kg | 550 kg | - |
| with cut-out | | - | 295 kg | - | 340 kg | - | 385 kg | - | - |
| with weighing equipment | | 330 kg | - | 370 kg | - | 465 kg | - | - | - |
| slim | | - | - | 330 kg | - | - | - | - | - |

G – gearbox; B – belt and chain transmission

| Mast | Optimum, Standard, Profi | sheet cover |
|------|-----------------------------|---------------|
| | 2300 | 120 kg |
| | 3000 | 150 kg |
| | 3500 | 170 kg |

| Prestretch device | hand brake | mechanical | el.mag. brake | 1motor | 1motor LIGHT | 2motor |
|-------------------|------------|------------|---------------|--------|-----------------|--------|
| without tearing | 20 kg | 40 kg | 30 kg | 65 kg | 50 kg | 70 kg |
| with tearing | - | - | - | 65 kg | - | 70 kg |

| Electric top-platen | for mast | 2300 | | | | 3000 | | | |
|---------------------|----------|---------------|-------|-------|-------|-------|-------|-------|-------|
| | | for turntable | 15 | 16.5 | 18 | 23 | 15 | 16.5 | 18 |
| | | 55 kg | 55 kg | 55 kg | 60 kg | 65 kg | 65 kg | 65 kg | 65 kg |

| pneumatic top-platen | for mast | 2300 | | | | 3000 | | | |
|----------------------|----------|---------------|-------|-------|-------|------|----|------|----|
| | | for turntable | 15 | 16.5 | 18 | 23 | 15 | 16.5 | 18 |
| | | 85 kg | 85 kg | 90 kg | 90 kg | - | - | - | - |

| portal top-platen | for mast | 2300 | | | | 3000 | | | |
|-------------------|----------|---------------|------------------|--|--|------|------------------|--|--|
| | | for turntable | 15, 16.5, 18, 23 | | | | 15, 16.5, 18, 23 | | |
| | | 360 kg | | | | | | | |

5.7.2. Weights of additional parts

| access ramp – for turntable | 15 | 16.5 | 18 | 23 | 25 | 27 |
|------------------------------|--------|--------|-------|--------|----|----|
| basic | 70 kg | 70 kg | 70 kg | 75 kg | - | - |
| prolonged 1700 | 95 kg | 95 kg | 95 kg | 100 kg | - | - |
| for turntable with scale | 105 kg | 105 kg | - | - | - | - |
| For slim turntable [1] | - | 20 kg | - | - | - | - |
| Auxiliary for slim turntable | | 9 kg | | | | |

Not used for turntables with cut-out

[1] - 1 piece of access ramp is already included in the weight of the turntable

| pit frame | for turntable | 15 | 16.5 | 18 | 23 | 25 | 27 |
|-----------|-------------------|----------|----------|----------|----------|----------|----------|
| | | standard | standard | standard | standard | standard | standard |
| standard | WMS, profil 50x50 | 35 kg | 35 kg | 40 kg | 45 kg | - | 60 kg |
| | WMS, profil 80x60 | 60 kg | - | 65 kg | - | - | - |
| universal | for WMS i WS | 65 kg | - | - | - | - | - |

Not used for turntables with cut-out and slim turntable

| holder of top sheet application | width of the foil | 1200 | 1400 |
|---------------------------------|-------------------|------|------|
| | | | |

Marking of **standard** and **optional** equipment

| | | | | |
|---------------------------------|-------------------|-------|-------|--|
| holder of top sheet application | width of the foil | 1200 | 1400 | |
| | | 30 kg | 30 kg | |

5.8. Transport dimensions

Dimension of the machine in tilting status, without transport frame, without beam
 On the basis of the order, is possible to deliver separately mast with pre-stretch equipment and turntable
 Transport dimensions are rounded to the top and for multiplicand 5mm
 "without bars", "left bars", "upright bars", "right bars" - orientation of light bars - see chap. 3.1.6

| mast | 2300 | | | | 3000 | | | |
|----------------------------|--------------------|-----------------|-------|--------|--------------------|-----------------|-------|--------|
| | length | | width | height | length | | width | height |
| | without top-platen | with top-platen | | | without top-platen | with top-platen | | |
| 15 standard | 2350 | 2500 | 1500 | 645 | 3025 | 3200 | 1500 | 695 |
| 15 cut-out, without bars | 2345 | 2500 | 1490 | 645 | 3025 | 3200 | 1490 | 695 |
| 15 cut-out, left bars | 2400 | 2500 | 1630 | 645 | 3025 | 3200 | 1630 | 695 |
| 15 cut-out, front bars | 2440 | 2500 | 1600 | 645 | 3025 | 3200 | 1600 | 695 |
| 15 cut-out, right bars | 2400 | 2500 | 1640 | 645 | 3025 | 3200 | 1640 | 695 |
| 16.5 standard | 2500 | 2500 | 1650 | 645 | 3025 | 3200 | 1650 | 695 |
| 16.5 cut-out, without bars | 2540 | 2540 | 1650 | 645 | 3025 | 3200 | 1650 | 695 |
| 16.5 cut-out, left bars | 2600 | 2600 | 1790 | 645 | 3025 | 3200 | 1790 | 695 |
| 16.5 cut-out, front bars | 2635 | 2635 | 1760 | 645 | 3025 | 3200 | 1760 | 695 |
| 16.5 cut-out, right bars | 2595 | 2595 | 1800 | 645 | 3025 | 3200 | 1800 | 690 |
| 16.5 slim [1] | 2635 | 2810 | 1650 | 600 | 3015 | 3190 | 1650 | 650 |
| 18 standard | 2650 | 2650 | 1800 | 645 | 3025 | 3200 | 1800 | 695 |
| 18 cut-out, without bars | 2695 | 2695 | 1800 | 645 | 3025 | 3200 | 1800 | 695 |
| 18 cut-out, left bars | 2750 | 2750 | 1940 | 645 | 3025 | 3200 | 1940 | 695 |
| 18 cut-out, front bars | 2790 | 2790 | 1910 | 645 | 3025 | 3200 | 1910 | 695 |
| 18 cut-out, right bars | 2750 | 2750 | 1950 | 645 | 3025 | 3200 | 1950 | 695 |
| 23 standard | 3150 | 3150 | 2300 | 645 | 3150 | 3200 | 2300 | 695 |
| 23 cut-out | 3245 | 3245 | 2450 | 645 | 3245 | 3245 | 2450 | 695 |

[1] slim turntable – the access ramp is dismantled.

| mast | 3500 | | | | | | | |
|----------------------------|--------------------|-----------------|-------|--------|--|--|--|--|
| | length | | width | height | | | | |
| | without top-platen | with top-platen | | | | | | |
| 15 standard | 3550 | 3725 | 1500 | 735 | | | | |
| 15 cut-out, without bars | 3550 | 3725 | 1490 | 735 | | | | |
| 15 cut-out, left bars | 3550 | 3725 | 1630 | 735 | | | | |
| 15 cut-out, front bars | 3550 | 3725 | 1600 | 735 | | | | |
| 15 cut-out, right bars | 3550 | 3725 | 1640 | 735 | | | | |
| 16.5 standard | 3550 | 3725 | 1650 | 735 | | | | |
| 16.5 cut-out, without bars | 3550 | 3725 | 1650 | 735 | | | | |
| 16.5 cut-out, left bars | 3550 | 3725 | 1790 | 735 | | | | |
| 16.5 cut-out, front bars | 3550 | 3725 | 1760 | 735 | | | | |
| 16.5 cut-out, right bars | 3550 | 3725 | 1800 | 735 | | | | |
| 16.5 slim [1] | 3515 | 3690 | 1650 | 690 | | | | |
| 18 standard | 3550 | 3725 | 1800 | 735 | | | | |
| 18 cut-out, without bars | 3550 | 3725 | 1800 | 735 | | | | |
| 18 cut-out, left bars | 3550 | 3725 | 1940 | 735 | | | | |
| 18 cut-out, front bars | 3550 | 3725 | 1910 | 735 | | | | |

Marking of **standard** and **optional** equipment

| mast | 3500 | | | | | | | |
|------------------------|--------------------|-----------------|-------|--------|--|--|--|--|
| | length | | width | height | | | | |
| | without top-platen | with top-platen | | | | | | |
| 18 cut-out, right bars | 3550 | 3725 | 1950 | 735 | | | | |
| 23 standard | 3550 | 3725 | 2300 | 735 | | | | |
| 23 cut-out | 3550 | 3725 | 2450 | 735 | | | | |

[1] slim turntable – the access ramp is dismantled.